

## Test Case- 40

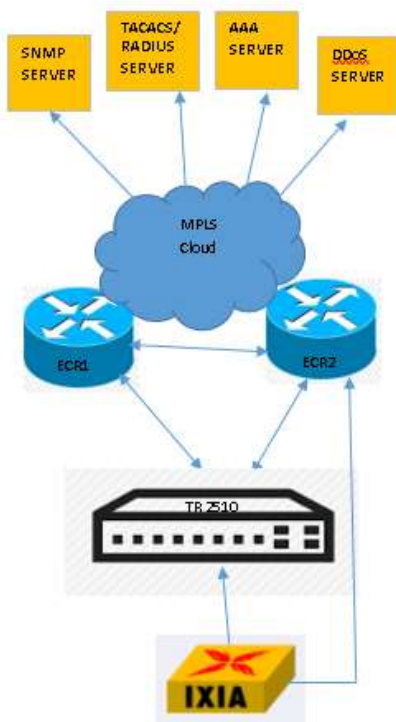
**Test Name:** RJIL-IP-QA-DS-SYS-041

**Test Objective:** To check support of both in-band and out-of-band management through a separate port.

**Test Configuration:**

```
interface VLAN89
ip address 10.64.64.218 255.255.255.248
!
interface GigaEthernet0/8
switchport mode trunk
switchport trunk vlan-allowed vlan id
!
Vlan vlan id
!
```

**Test Set up (Including Pre requisites):** Switch , ECR1,ECR2,IXIA



**Procedure:** Connect Switch to ECR1,ECR2

<b>Action:</b>		<b>Response:</b>	
<b>1</b>	Telnet,ssh the switch through in-band management	<b>1</b>	We can able to telnet,ssh the switch
<b>Expected Result:</b> We can able to telnet the switch through in-band management			
<p><b>Actual Result:</b></p> <p>Switch_config#show run int vlan 1</p> <p>Building configuration...</p> <p>Current configuration:</p> <p>!</p> <p>interface VLAN1</p> <p>ip address 192.168.1.1 255.255.255.0</p> <p>Switch_config#show run int vlan 883</p> <p>Building configuration...</p> <p>Current configuration:</p> <p>!</p> <p>interface VLAN883</p> <p>ip address 10.64.89.228 255.255.255.248</p> <p>ipv6 address 2405:200:1410:1010::84/124</p> <p>Switch_config#</p>			